



MECANIQUE ET ENGRENAGE MODERNES

Accounting & Administration Office
15 av. Barthélémy Thimonnier - BP 25
69641-CALUIRE CEDEX - France
Tel : 00 33 (0)4 78 23 98 54
Fax : 00 33 (0)4 78 23 07 17

Headquarters & Plant
Z.I Le minaret
24450 - LA COQUILLE
Tel : 00 33 (0)5 53 52 85 48
Fax : 00 33 (0)5 53 52 05 84

Bandsaw headrig

This bandsaw is constructed from steel plates, machined and assembled with great care, taking into account the constraints on the use, mainly due to the blade tension and forces generated by sawing.

The table is fully machined and heavily ribbed to receive the various elements of mechanisation

The wheels are solid cast iron, stabilized in the oven and then left to rest for several months to release stress.

100% machined on a CNC lathe equipped with a copier for the machining of the precise convex bulge. The wheels are balanced statically and dynamically.

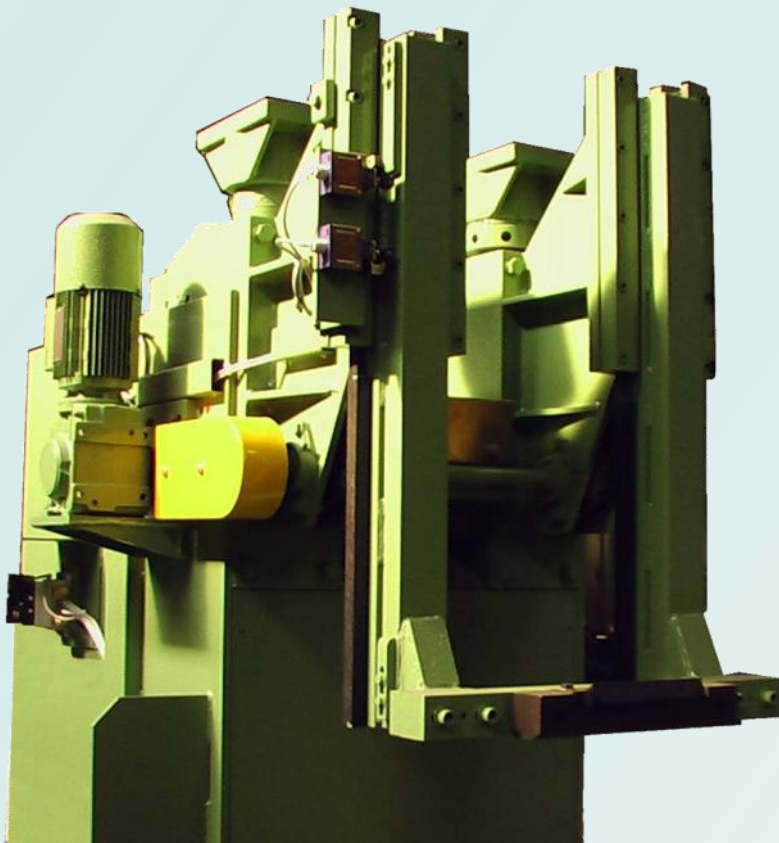
The blade tensioning system is hydraulic suspension with large accumulators, filled with nitrogen.

A hydraulic unit is integrated in the frame, fitted with a pressure switch for permanent control of oil pressure and for safety, ensuring the automatic tension.

Blade guard

Besides the sheet metal cover that protects the nonworking part of the blade, a descending guard which is synchronised with the upper guide protects the working section of the blade which is not currently being used. If the saw is not used for an extended period of time, both the guard and the guide will automatically default to the lowest point.





High blade guide details

- *Guidance on 2 slides*
- *Electric motor, controlled from the control panel of the carriage*
- *High and low boundaries by limit switches*
- *Preset cartridge, mounting and dismounting is easy*

Column details

- *Cylindrical slides move the wheel*
- *Integrated control unit to perform the basic settings when installing the saw blade*

Column details

- *Hydraulically powered, automatic, suspended on a cushion of nitrogen,*
- *Integrated hydraulic power unit, pressure switch for permanent control of oil pressure for safety.*

Technical Specifications

- *Wheels are centred on the column, diameter, 1400 mm*
- *Rim width, 185 mm*
- *Blade width, 206 mm*
- *Distance between blade and column, 650 mm*
- *Underpass guide from the top of the trolley tracks, 1,050 mm*
- *Guide to pressure is electrically lifted*
- *The bottom wheel is equipped with a pulley, type SPC 6 grooves, 700 mm diameter.*





Details of roller slides, motor, guide to pressure of the scraper and brass baffles sawdust below the steering wheel.

Recommended minimum 75 KW engine with electronic starter for ensuring the controlled braking of the wheel less.

Lubrication and cleaning of the wheels and blade

Felts saturated with cleaner provide lubrication and clean the blade and wheels . Brass scrapers clean and protect the wheels from decrement projections sawdust.



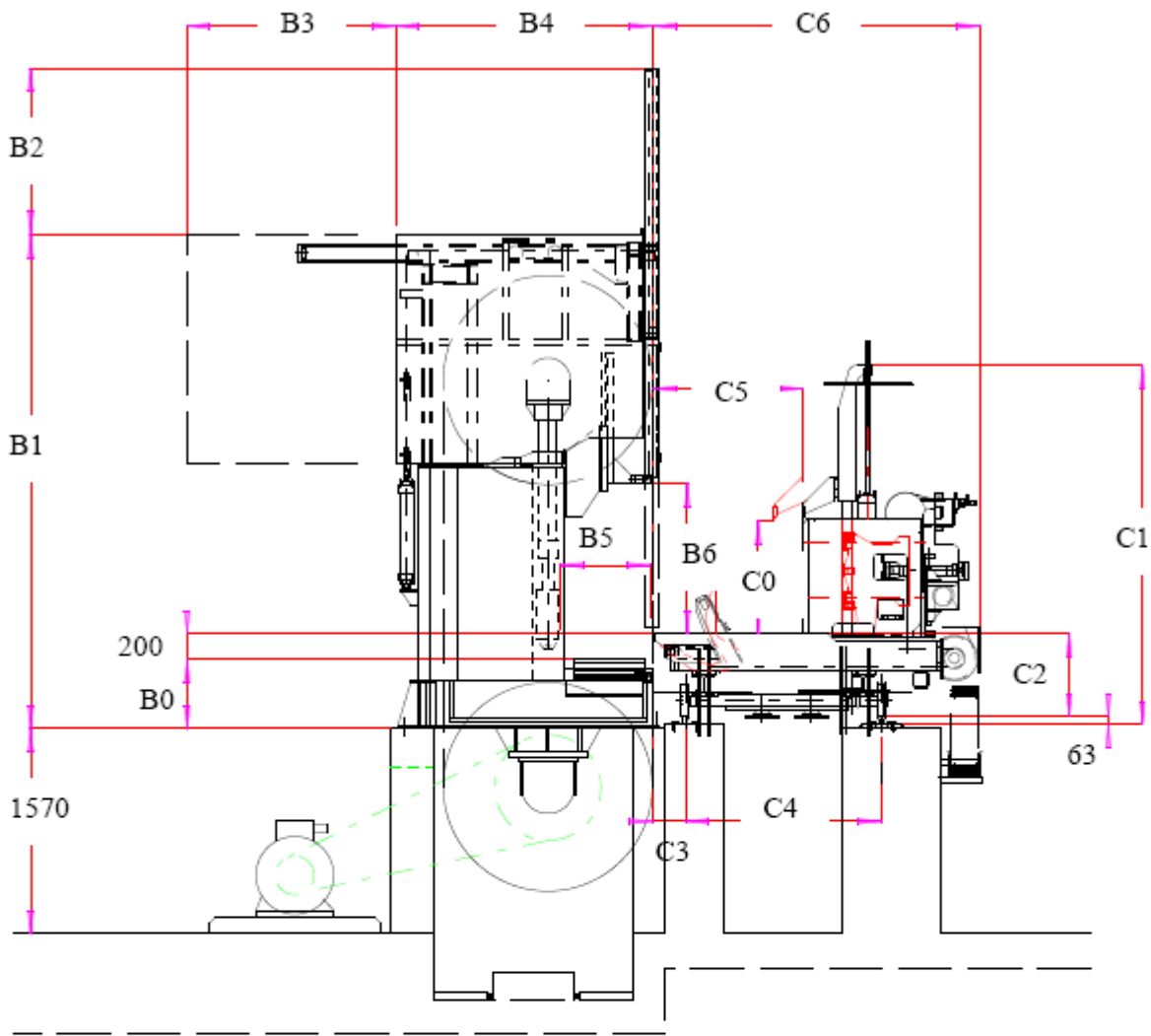
A detector deflection blade is also available as an option to use the frame saw, at full capacity, while maintaining quality lumber, blameless.

Side opening cover for a total disengagement of the steering wheel higher.

***Details of the lubrication system of the blade, by spraying.
(Moved optional)***

Motorised roll bars, allowing the release of wood out the back of the frame.

Layout of the frame



		B0	B1	B2	B3	B4	B5	B6
	140	320	3390	1115	1400	1770	600	1075
	160	375	3930	1300	1600	1950	680	1300
	180	400	4200	1400	1800	2150	765	1475

		C0	C1	C2	C3	C4	C5	C6
	DGR 80	820	2750	635	250	1300	950	2300
						1500	1150	2500
	DGR 100	1015	3100	635	245	1300	950	2300
						1500	1150	2500
	CGR 80	820	2660	590	270	1300	1000	2330
						1500	1150	2660